
Supporting People and Communities Everyday

SPACE



2016

Annual Report





Contents Page

Chairperson - Paul Slevin	4
SPACE 1—Supporting Parents and Children	5
Big Lottery - SPACE 1	6
BME Family Support	7
EISS - Early Intervention Support Service	8
Newry and Mourne Family Support Hub	9
SPACEWALK	10
Kilkeel SureStart	12
SPACE 2 - Supporting People and Communities	13
Older People's Programmes	14
Community Food Initiative (CFI)	15
Representation and Strategic Influencing	16
SPACE 3 - Supporting Potential and Community Enterprise	17
Love your Space	18
Our SPACE	19
Staff Training	20
SPACE Volunteers	21
Director - Jacinta Linden	22
SPACE Memories 2016	23
SPACE's Programme Funders	24
SPACE Staff and Board of Directors 2016	25

Chairperson Paul Slevin

As Chairman of SPACE it is my privilege to reflect back on a year which has surpassed all expectations, particularly in strengthening relationships with our partnering agencies and delivery of key community services.

Under the exemplary leadership of our Director, Jacinta Linden, our staff team has grown and their dedication and care continue to make the difference in what we do.



With demand for SPACE services and support continuing to grow, we are mindful of the need to continuously fundraise to sustain our work. Without the generosity of the general public in the Greater Newry, Mourne and Down area, we would not be able to provide help to so many children and families in need. The next few years will bring particular challenges around welfare reform and funding, please help us to continue our work by remembering SPACE as a local charity supporting local people in need.

As we look forward to a year with exciting developments ahead, as always, I remain indebted to the support of my fellow board members, to our funders, our partner agencies and to our team of loyal volunteers - without you all we wouldn't be where we are today.

Paul Slevin

SPACE 1

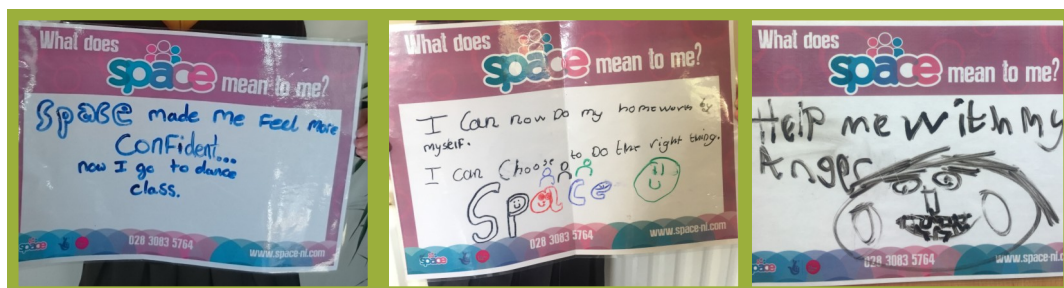
Supporting Parents & Children



Big Lottery - SPACE 1

Funded by the Big Lottery, SPACE 1 aims to promote social and community engagement for parents and children and help them develop resilience and resourcefulness to manage the demands of daily living. We also develop links with the community for the families and promote engagement with more specialist services and supports where necessary. Visit our website to view our promotional videos showcasing our work.

2187 Hours of Family Support delivered	3 Families and Schools Together Programmes 138 participants	12 Week support programme, SPACEWALK for boys aged 8-11	3 x Summer Schemes 78 participants
4 x Networking Events 398 participants	83 Successful Grants for local families leading to £50,000 worth of material goods to help families Eat, Sleep, Learn, Play together (For example: tables, white goods, beds)		1 Strengthening Families Programme 14 participants



A Mother's View

"Since working with SPACE I have started to look after myself and try to be a more confident person, because I need to be strong for my children as they need me more now than ever".

A Father's View

"SPACE has helped my little girl to become more focused and her behaviour has improved lots. Homework routine is so much better and fully completed—prior till our support worker coming, homework was very stressful".

BME Family Support

Funded by CYPSP through the Southern Health and Social Care Trust, the aim of the BME Practical Support Contract is to provide flexible support and activities to enable Newcomer Families to integrate and engage in their new communities. SPACE provides support on emerging needs, signposting and a information point for social and community groups.



170 Hours of
practical
Home based support



46 BME families
signposted to
other
specialists



15 Families
engaged in events
and Summer
Schemes



1 BME Parent
volunteers with
SPACE



Families
Represented
at NM&DDC
Intercultural Forum



32 Home based
assessments

A Mother's Story

Marianna came to us for support via the Family Support Hub, she was lonely, suffered low mood, confidence and self esteem issues with no social network. After supporting her for 16 weeks we recently reviewed her Outcome Star and the journey she has made was incredible. She is now a more confident mummy of her two boys; she attends a course in the local college, has joined a social club, completed a parenting programme and is saving in the credit union for a car. She told us that she feels so much better in herself and now has a happier home life due to our intervention and although she still has a long way to go she believes that she would never have taken this journey without the support of SPACE.

EISS—Early Intervention Support Service

What is the Early Intervention Support Service?

The EISS works within the Craigavon and Banbridge area to offer short term support to families with children 0-18 who have additional needs or are facing challenges that are difficult to overcome such as:

- ⇒ Issues at school
- ⇒ Behavioural difficulties
- ⇒ Coping with illness or bereavement
- ⇒ Family difficulties
- ⇒ Domestic violence
- ⇒ Difficulties with development or health related issues

138
Families
Supported

“Can’t thank you enough for everything you have done for me and my family and more importantly for my child. Without your support we wouldn’t be where we are today. Thank you very much”. - *EISS Client*

Contact:

Early Intervention Support Service
NIACRO/ SPACE
26 Carlton Street, Portadown,
BT62 3EP
Tel: 028 3833 1168
Email: eissouthern@niacro.co.uk

What does the Early Intervention Support Service offer?

- ⇒ A range of support tailored to meet the needs of individual families. EISS works with families for a time limited period of around 12 weeks
- ⇒ A project worker from EISS will meet with the family to help identify both your needs and strengths
- ⇒ EISS works with parents and children to develop a plan which is individually tailored to meet the identified needs
- ⇒ You and your child will participate in putting the plan in place, reviewing the plan and deciding when needs have been met
- ⇒ EISS can provide information and help you to access other services in your area

Newry and Mourne Family Support Hub

There are twenty-nine Family Support Hubs throughout Northern Ireland and SPACE has co-ordinated the Newry and Mourne Hub since 2013. The Hub is a group of voluntary, community and statutory organisations who match requests for family support to the most appropriate services.

They use local expertise and knowledge to identify the most appropriate support for families and then monitor and evaluate services, ensuring that all requests for support are followed through.



12 Hub Meetings



262 Newry and Mourne Families sought support through the Hub



355 Services and support plans in place

“Our home life is so much better and the house is more organised” – “I don’t know where I would be without this support – probably on anti-depressants”. - *Family Support Hub Client*

Reasons for Referrals:



44%
Practical Support



46%
Emotional/ Behavioural
& Mental Health



10%
Financial Support

For further information on the Newry and Mourne Family Support Hub or to make a referral please contact Allison Slater at:

24 Monaghan Street, Newry, BT35 6AA. Tel: 028 3083 5764

SPACEWALK

SPACEWALK has been specifically designed for young people and their families who are at risk of marginalization; who struggle with building relationships or present challenging behaviours. With a focus on communication, decision making and conflict resolution, it is a highly structured programme which encourages participants to take healthy risks, examine the decisions that they make and make the link between decisions and consequences. Eight young boys aged 8-11 years old were selected following 1:1 support work completed by SPACE. Each week activities were planned around different themes to encourage the boys to take risks and learn and develop positive attitudes and behaviors, and to actively achieve their programme aims.

SPACEWALK Themes:



Take Risk



Trust Adults



Show Respect



Show Leadership



Trust each other



Developing Life Skills



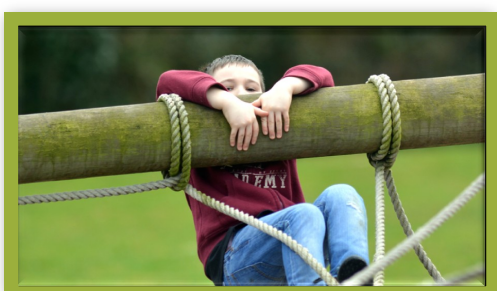
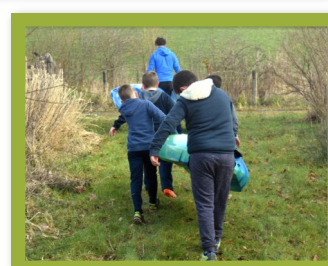
Listen to Instructions

The SPACEWALK boys worked very hard over the three months and were challenged at every activity. There were some tears and tantrums but most of all lots of laughter, encouragement and bravery. Staff were thrilled to hear from parents and teachers of the positive changes they have witnessed from the boys at home and in school. SPACE is very proud of the first SPACEWALK cohort and look forward to running a further SPACEWALK in the near future.



Participants achieved

97.7%
of their aims!



A Father's Story

My wife and myself are very proud of the achievements Ryan has achieved from the start of this programme. For many who look at Ryan you would think he's a normal fun loving child, but for us his family, friends and teachers know that Ryan has his moments and sometimes finds it hard to interact with other children, at times would have self confidence issues and this is where SPACE came to our help and what a help it's been. SPACE offered Ryan the opportunity to go along on Saturdays and do team building activities with other boys his age and with some of the same issues. Watching their DVD I would personally like to congratulate all the boys on how far they have come along from starting this.

This all can't happen without the continued support and work from the staff and volunteers from SPACE. It was also great to see elected representatives at the SPACEWALK Celebration evening, for them to see first hand what joy and life experience these programmes provide to these kids and families.

Kilkeel SureStart



235	227	65	286	540	364
Families registered	Mothers registered	Fathers registered	Children registered	Sessions facilitated	Home visits

“My son loves Lots for Tots. I enjoy it because it gets me out of the house and I have made some great friends”.

“Everyone is so friendly and relaxed and we can ask as many questions as we like and be certain of well-informed answers”.

609 resources provided which included:



Baby Massage	Dental Health	Antenatal Packs	Play Packs	Home Safety Equipment	First Aid Kits	BookStart+ Packs
--------------	---------------	-----------------	------------	-----------------------	----------------	------------------

Family A

Mum, dad and three young children moved to Kilkeel from an Eastern European country and registered with SureStart in 2015. The mother requested some support with managing the behaviour of the middle child, then aged three. As a result, the SureStart parenting support worker carried out a period of work in the home to support the mother to address the behaviour and to establish a bedtime routine. The family was also referred to Home Start and attended the weekly Home Start Family Group in the Seashell Centre.

Since registering, the family has regularly attended a wide range of SureStart services including the Breastfeeding Support Groups, Lots for Tots Parent and Toddler Group, Cook It and the Nurturing programme. The children availed of the sessional childcare whilst their mum attended some programmes and the father has also come along to a number of the Main Men sessions with his children.

SPACE 2

Supporting People and Communities



Older People's Programmes



896 Dedicated
hours of
support



320 Older people have
engaged in programmes
supported by SPACE



4 SPACE Facilitators
7 Volunteers



3 Successful grant
applications



15 Older people trained
on iPad's



2 Social groups
supported weekly

£22,400

Secured to support Older People's programmes

"I come to Comfort Zone primarily to make new friends and I think it's very important because you'd get so isolated at home, and it's a happy place to be even in the Winter and I just really enjoy it". - *Comfort Zone Client*

"When my husband was told he would have 5 weeks hospital treatment, we did not know how we would manage as we do not drive, Mourne Home 2 Hospital was a real life saver".
- *MH2H Client*

Community Food Initiative (CFI)

In July 2016, SPACE secured a contract with South and East Cork Area Development (SECAD) to deliver the Safe Food funded - Community Food Initiative (CFI) across Newry and Mourne. The aim of CFI is to positively influence the eating habits of low income families through promoting greater access and availability of healthy and safe food in low income areas, using a community development approach.



CFI Themes

Cooking Skills

Healthy Shopping

Improving the availability and access to safe and healthy food in the community and complementing existing structures that offer healthy options

Budgeting and food/ meal planning skills

Supporting and increasing awareness/ knowledge around health eating

Preventing food wastage, food safety and hygiene

SPACE represents local families on the following:

**Wellbeing and
Active
Partnership
(WAP)**

**CYPSP
Southern
Outcomes
Group (CYPSP)**

**Newry Mourne
and Down
Rural Advisory
Group**

**N&M
Integrated
Care
Partnership**

**Newry Junior
Chamber of
Commerce
(NJC)**

**Newry Mourne
and Down
Intercultural
Forum**

**Strengthening
Families
Steering
Group**

**Southern Area
Family Support
Hub Steering
Group**

**Craigavon and
Banbridge
EITP Steering
Group**

**Newry DEA
Strategic
Stakeholder
Forum**

**Newry and
South Armagh
Locality
Planning Groups**

**Age
Friendly
Strategic
Alliance**

SPACE 3

Supporting Potential and Community Enterprise



Love your Space

Love your Space is a Social Enterprise that helps our organisation provide more resources to support people. Social Enterprises are community based businesses that trade to tackle social problems, improve people's lives, improve communities or the environment. Love your Space (LYS) started in November 2014 with a goal of generating income, attracting volunteers and providing an opportunity to let customers know about SPACE services. Over two years later the LYS team has welcomed over twenty volunteers who help us to deliver the best quality of service to our customers.



At Love your Space we pride ourselves in the quirky styling of the shop and all the products within. LYS products include in-house styled and created up-cycled furniture, clothes, craft items, jewellery and bric-a-brac.

All donations are welcomed and the LYS team can't thank our local communities enough for their donations.

Our LYS volunteers continue to grow with confidence completing their daily tasks, presenting the goods in the shop, styling the shop window, retailing online and really enjoying their time with LYS. We are so proud of their commitment and creativity and grateful for their hard work and efforts in helping us to support local families.

We're Social - Let's Connect:

@Loveyourspace21



@loveyourspacenewry

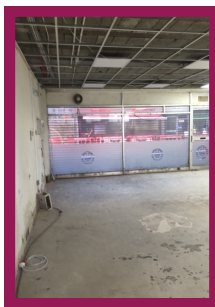


Pop in to see the LYS team at:
24 Monaghan Street, Newry,
BT35 6AA.

Our Space

As Love your Space has developed, we have become very aware of the growing number of volunteers with additional needs who have come to help in the project and benefitted from job coaching, peer mentoring and life skills support. Many of our LYS volunteers have worked hard to develop skills and confidence, many have moved on to realise their full potential and change their lives for the better. We are so proud of being part of this journey and are keen to develop this model to help others with additional needs in our locality. The primary aim of Love your Space was to generate income to further help local families. However, we have been quietly impressed by its organic growth as somewhere adults with additional needs can learn, gain experience and develop confidence. Love your Space has become a safe space for supporting people with additional needs into employment, training, transition and volunteering.

In January 2016, we needed premises in the centre of town to enable volunteers/ trainees to travel from their homes by independent transport and we needed staff to develop the project. As 2016 ends, we are delighted to report that we have signed a lease with the NIHE for two commercial units in Marcus Street Newry, and we will begin transitioning to Marcus Street very soon. More good news followed, when we learnt that our application to the NIHE Social Enterprise call resulted in an award of £50,000 over two years which would cover the cost of staff to develop the project.



We are indebted to the volunteers, families, staff and agencies who saw the potential through the development of the Love your Space project and helped us work towards making this project happen! We are delighted with the progress on this project over 2016 and are genuinely excited to start the next step of the journey – Marcus Street will be an exciting journey for us all.

Staff Training

In line with our Strategic Plan, SPACE is fully committed to developing its staff and volunteers to reach their full potential. Throughout 2016 the SPACE team have completed many different courses and programmes to further enhance the delivery of service, these included:

UNOCINI Training (CINI)	Child Protection Training	Outcomes Star Training (Triangle)	SROI Training (NEF Consultancy)
Child Sexual Exploitation (Barnardos)	Executive PA Course (CO3)	iMovie Video iPad's (View Digital)	Development of a Volunteer Programme
Infant Mental Health	Solihull Approach Training (SHSCT)	AdvDip—Financial Accounts, Law & Ethics	Skills for Staying Safe (Autism NI)
Puppet Skills Training	MSc Executive Leadership Programme (UUJ)	Motivational Interviewing Training	Solution Focused Brief Therapy
Keeping Children Safe Youth Net	Traveller Cultural Awareness	Strengthening Families Facilitator	Sustainable Investment Adv Dip (UUJ)
Gimme 5 Facilitator Training	Christians against Poverty - ESLP	Multi– Sensory Room Training	Baby Friendly (UNICEF)
COOK IT Training	Welcome to the World Training	Food Value Training	Mindfulness Awareness Training

SPACE's Volunteers

SPACE's volunteers support us through all areas of our work. SPACE has five main volunteering areas:



1. Retail



2. Furniture Upcycling



3. Family Support



4. Drivers



5. Events Support

We strive to develop and embed a strong culture of volunteering within our organisation and very much appreciate all the work and donated time of our volunteers. SPACE has developed many new partnerships with external agencies to provide placements to young individuals including, The Link Works, Clanrye Group, St Paul's High School, Mencap, Disability Action, MindWise and Action Mental Health. These placements have been mutually beneficial and the relationships continue to grow.

"A very important aspect of volunteering at SPACE is the feel good feeling you get out of finishing a project knowing this will provide a local family in crisis with a helping hand". - Tim (54)



38
Volunteers



3,375 Hours

Monetary value of these hours is equivalent to

£24,300!

"I picked to volunteer with SPACE because I like the fact it's helping local people and also helps to build my confidence". - Nicole (17)

Director Jacinta Linden

2016 was one of those years we were half way through before we realised it had started! This year we completed a strategic review of SPACE resulting in a new strategic plan which incorporates learning emerging from the CCAT assessment tool which will direct our work over the next three years. We also completed full registration with the Charity Commission and invested widely in our staff, our services and our governance. We remain however, totally dependent on the goodwill of the general public to keep on making donations and fundraising to help continue our work.

The changing role of the non-profit sector, driven in part by funding changes, part by the rapidly changing NHS and part by a negative media focus, provide a perfect backdrop for charities to explore opportunities to become more efficient, more innovative and more committed. Contracts now form the main relationship between SPACE and government and with an emphasis on outcomes and service delivery; there comes additional pressure to improve performance and to move beyond conformance and compliance.

The community and voluntary sector in NI is at a key juncture. There are many opportunities and challenges to meet, yet once again in 2016 staff and management excelled in delivering high standards of practical family support work, creating new communication media such as the Tom and Pauline video animations helped explain the impact of our work. Our small but dedicated staff team has gone the extra mile to deliver Incredible Years Programmes, School based FAST programmes, the SPACEWALK programme, Summer Schemes as well as other information sharing events and services.

It is a privilege and a pleasure to work with the board, staff, volunteers and funders of SPACE, we love what we do and hope we can continue with your support to reach out to those in our community in need of a helping hand.

Thank You,

Jacinta Linden



SPACE's Programme Funders



LOTTERY FUNDED



**Southern Health
and Social Care Trust**



SECAD
South & East Cork Area Development



**Housing
Executive**



**Believe in
children**



Barnardo's



DE

Department of
Education
www.deni.gov.uk



Early Intervention
Transformation Programme



Comhairle Ceantair
**an Iúir, Mhúrn
agus an Dúin**

**Newry, Mourne
and Down**
District Council



**action for
children**

— since 1869 —



**Public Health
Agency**



Children & Young People's Strategic Partnership

SPACE STAFF & BOARD OF DIRECTORS 2016

Board of Directors

Paul Slevin	Chairperson
Ingrid Perry	Vice Chairperson
Paul Farquhar	Treasurer
Aisling Rennick	Secretary
Martina Flynn	Board Member
Brian Quinn	Board Member
Jacinta Linden	SPACE Director

SPACE Staff

Allison Slater	Operations Manager
Margaret Toner	Accounts & Project Administrator
Aine McKeown	Marketing & Volunteer Coordinator
Anouska Kenny	Executive Assistant
Niamh McDonnell	Family Support Worker
Martina Crothers-Olusanya	Family Support Worker
Sarah Haughey	BME Family Support Worker
Julia Turley	Early Intervention Support Services
Marie-Claire McCann	Early Intervention Support Services
Amy Henshaw	Love your Space Supervisor

Additional Sessional Staff

Sinead, Mary, Denise & Anne

Kilkeel SureStart

Pauline Downey	Sure Start Coordinator
Kate Cunningham	Health Promotional Worker
Fiona Haughian	Family Support Worker
Annamarie Mathers	Sure Start Administrator



SPACE
24 Monaghan Street
Newry
Co. Down
BT35 6AA

T: 028 3083 5764
W: www.space-ni.com
E: info@space-ni.com



Sure Start Office - Kilkeel
18 Newcastle Street
Kilkeel
BT34 4AF

T: 028 4176 4893